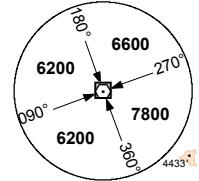




**ELEV, ALT & HGT IN FEET**  
 DIST IN METERS  
 BRG ARE MAG  
 VAR 21°W (2014)

FAO 104  
 8000 FT ALT  
 GND

**DME REQUIRED**



**MSA 25NM KYV VOR**

28°40'S

28°50'S

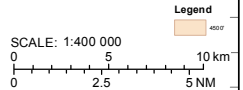
FAKM TMA A  
 EL145  
 5500 FT ALT

FAKM CTR  
 5500 FT ALT  
 GND

**KIMBERLEY**  
 VOR/DME 113.2  
 CH 79X  
 KYV  
 28°47'59.82"S  
 024°45'37.32"E  
 3963'  
 KYV - THR 20: 0.48NM

4321'

10NM



24°40'E

24°50'E

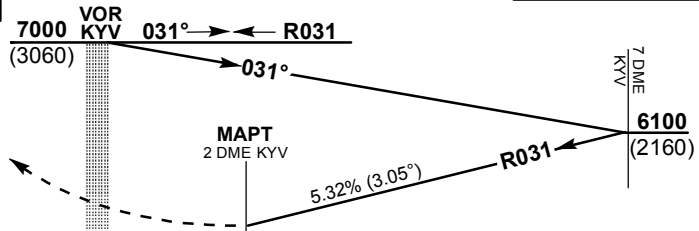
25°0'E

<b>KYV DME</b>	7	6	5	4	3		
<b>ADVISORY ALT(HGT)</b>	6100 (2160)	5780 (1840)	5460 (1520)	5130 (1190)	4810 (870)		

**TRANSITION ALT 7000**  
**TRANSITION LEVEL ATC**

**INA ALT: 7000 or higher MSA**

**MISSED APPROACH:**  
 Climb to 6000FT ALT.  
 At 6000FT ALT turn right direct to VOR KYV. Hold at 7000FT ALT.



**THR ELEV 3940**  
 NM to/from THR RWY 20

**CHANGE: OCA (H)**

<b>OCA (H)</b>	<b>A</b>	<b>B</b>	<b>C</b>	<b>D</b>	<b>GS</b>	<b>KT</b>	80	100	120	140	160	
					<b>7 DME to THR</b>	M:S	4:54	3:55	3:16	2:48	2:27	
<b>Straight-in Approach</b>	VOR	4570 (630)	4570 (630)	4570 (630)	4570 (630)	<b>Rate of descent</b>	FPM	431	539	647	755	862
<b>Circling</b>	Circle to land at the discretion of the pilot in command					<b>NOTE:</b>						

**NOTE:**  
 1. Procedure Turn Approach applicable only within 30° of the Outbound Heading. Use phraseology "Request Procedure Turn Approach".  
 2. RoD from 7 DME KYV computes at 3.05%.